

WIND RESOURCE ASSESSMENT CFD MODELING WORKSHOP

Workshop place:

Chennai, India

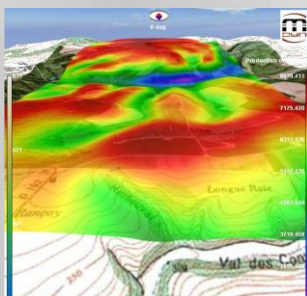
Workshop date:

2 March 2010

Workshop description:

Introduction to the wind modeling in complex terrain using the
CFD code **meteodyn WT**

Detailed schedule:



09h Registration and installation of the training license of the software **meteodyn WT**

10h Introduction to the CFD technology vs. linear models

11h *Coffee Break*

11h30 Definition of the site

- Size and formats of the maps
- The roughness and forest canopy
- Adding a picture or Google Earth screenshot layer
- Automatic creation of the mesh

12h30 *Lunch Break*

14h Directional calculations

- The thermal stability parameter
- Visualization of the directional wind characteristics
- Optimization of the met mast location

15h Extrapolation of the climatology

- Using the climatology from several met masts
- Designing the wind farm
- Optimization of the energy production
- How to use the outputs

16h30 Questions

17h00 *End of the session*